



CFRAME SOLENOID

Two position linear solenoid with C-frame construction.

Features

- Economical construction
- AC solenoids and DC solenoids available
- Encapsulated coils on most models
- UL approval on many models

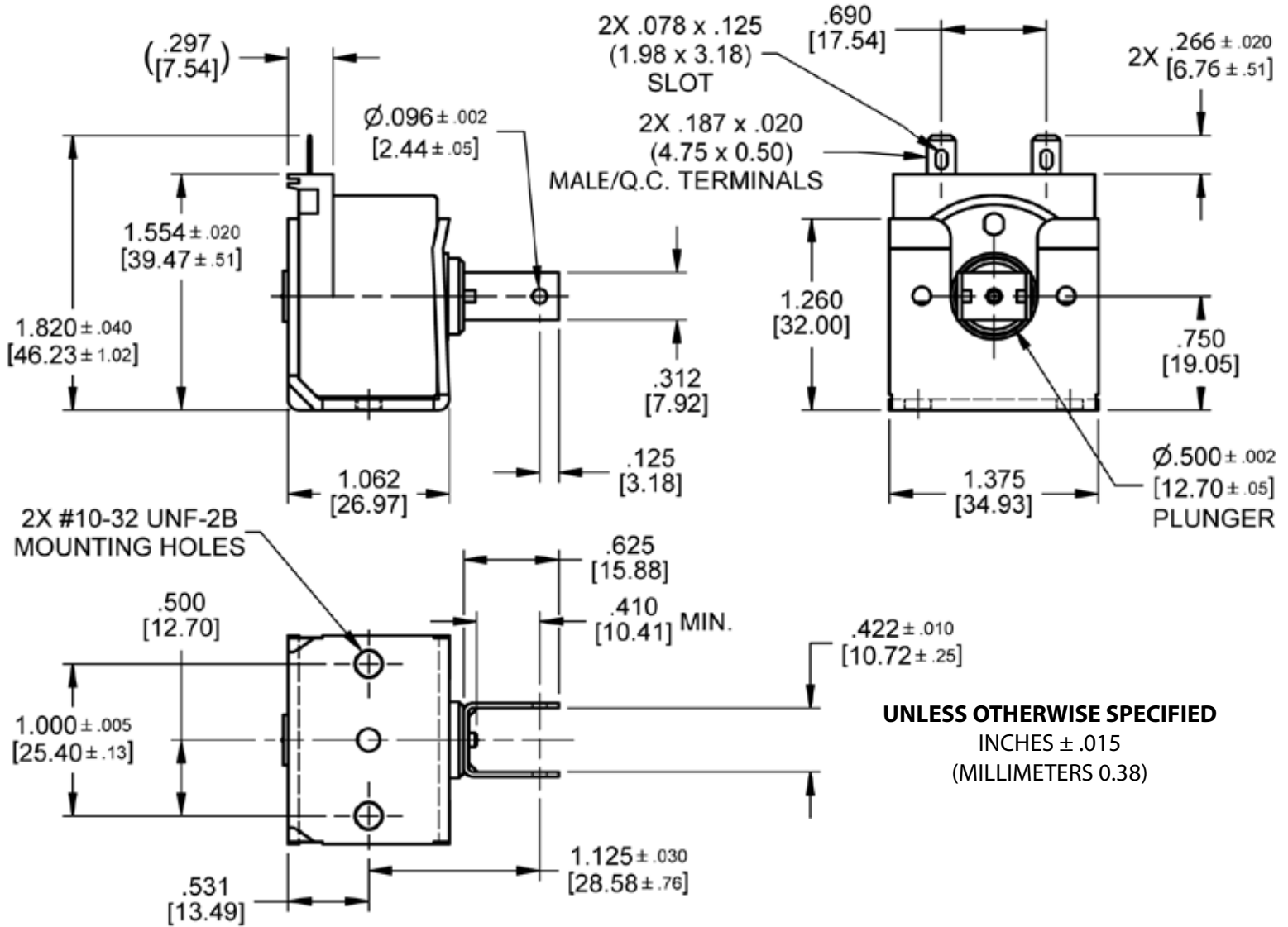


Electrical Specifications	
Coil Voltages	24, 120, 240 VAC 6, 12, 24, 110 VDC
Coil Power	13.7 VA Continuous, 52 VA Intermittent, 137 VA Pulse 8.6 Watts Continuous, 15.5 Watts Intermittent, 86 Watts Pulse
Coil Termination	0.187" [4.7] quick connect terminals (standard) 0.250" [6.4] quick connect terminals (optional) Wire leads optional with tape wrapped coil
Duty Cycle	Continuous, intermittent and pulse (see standard part numbers on page 4)
Coil Treatment	Encapsulated (tape wrapped optional)
Insulation Class	Class A Rating - 105°C (221°F) Max. (standard) Class F Rating - 155°C (311°F)Max. (optional)
Dielectric Strength	30 Volts and Under: 500 VRMS Over 30 Volts: 1000 VRMS plus 2X rated voltage for 1 minute
Mechanical Specifications	
Size	1.062" [27.0] (L) x 1.375" [34.9] (W) x 1.413" [35.9] (H)
Forces	See force curves on page 3
Plunger Diameter	Ø .500" [12.3]
Plunger Guide Material	Plastic
Mounting	2X #10-32 UNF-2B Mounting Holes
Weight	Plunger - 0.9 oz [25.6 gms], Total - 5.0 oz [141.8 gms]
Life Expectancy	250,000 Cycles (Dependent on load conditions)
Agency Approval	
UL File No. E57982 For Continuous Duty UL File No. E74443 For Insulation Systems S105, S130, S130D, S130D1, S155D	

Dimensions: inches [mm]

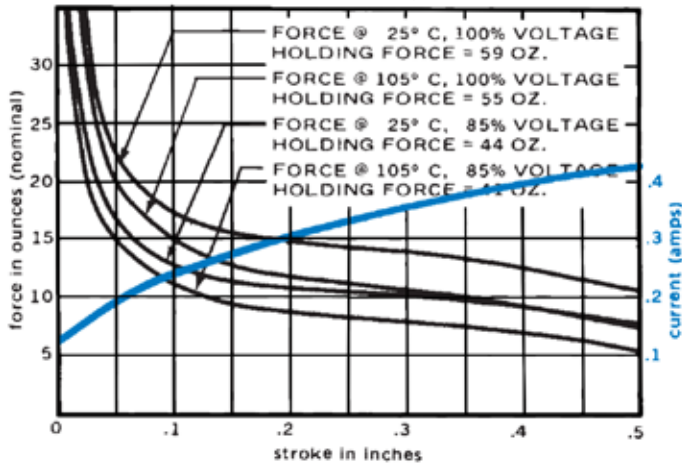
Dimensional View

Units: Inches [mm]

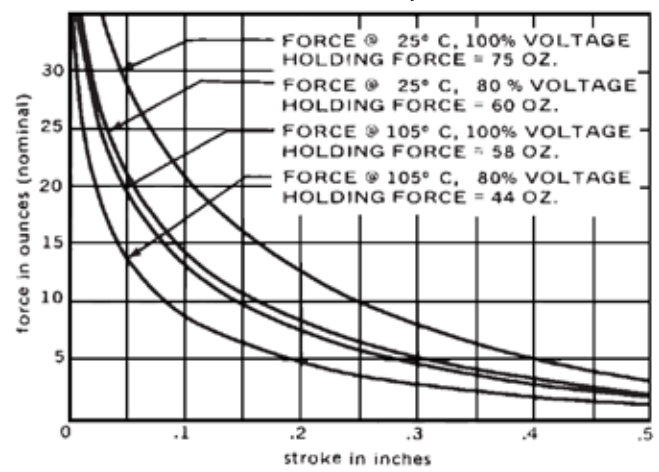


Force Curves

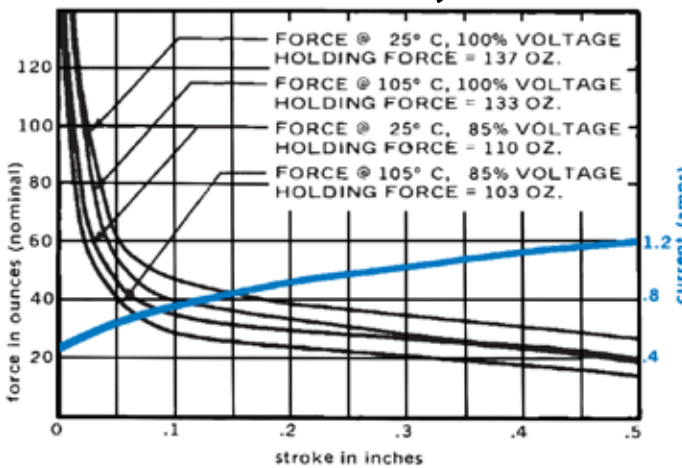
AC Continuous Duty - 13.7 VA



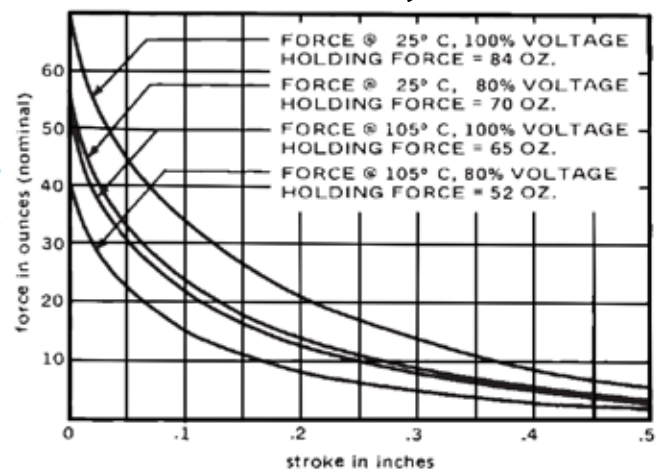
DC Continuous Duty - 8.6 Watts



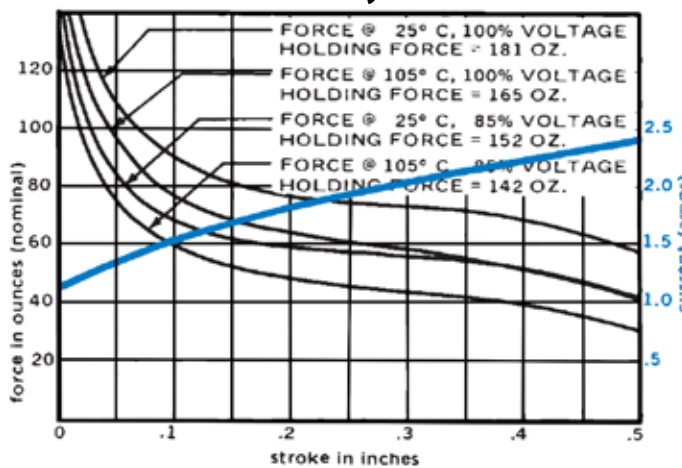
*AC Intermittent Duty - 52 VA



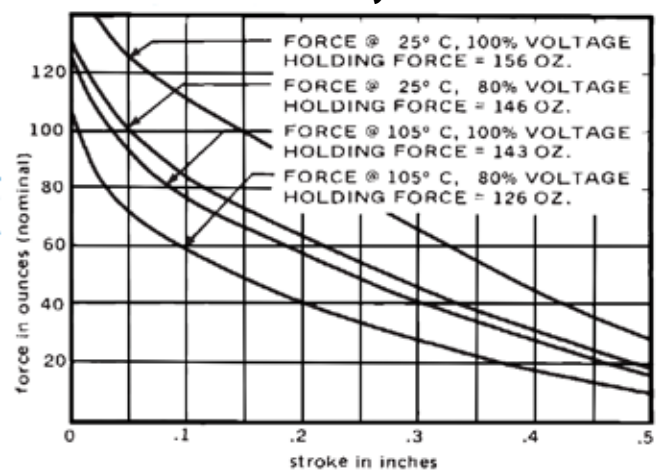
DC Intermittent Duty - 15.5 Watts



AC Pulse Duty - 137 VA



DC Pulse Duty - 86 Watts



Standard intermittent duty cycle at nominal voltage is 25%, with three (3) minutes maximum "ON" and nine (9) minutes minimum "OFF" in a repetitive cycle. Standard Pulse duty cycle is 10% with 100 milliseconds "ON" and 900 milliseconds "OFF".

NOTE: Approx 36 sq. in. Heat Sink Required

*AC intermittent duty winding based on 20% duty cycle with one "1" minute maximum "ON" time.

Standard Part Numbers

Parts No.	Voltage	Duty Cycle	Power	Resistance (Ohms)	Operation	Typical Force oz [N] 100% Voltage, 77°F [25°C], Stroke @				
						0.000"	0.125"	0.250"	0.500"	0.750"
53673-83	24 VAC	Continuous	13.7 VA	9.3	Pull	59 [16.4]	17 [4.7]	14 [3.9]	10 [2.8]	0 [0.0]
53673-94*	120 VAC			240						
53673-97	240 VAC			960						
53674-83	24 VAC	Intermittent	52 VA	3.3	Pull	137 [38.1]	45 [12.5]	36 [10.0]	27 [7.5]	0 [0.0]
53674-94*	120 VAC			84.1						
53674-97	240 VAC			342						
53675-94	120 VAC	Pulse	137 VA	37.6	Pull	181 [50.3]	85 [23.6]	75 [20.9]	57 [15.8]	0 [0.0]
53675-97	240 VAC			143						
53676-80	6 VDC	Continuous	8.6 Watts	4.1	Pull	75 [20.9]	18 [5.0]	10 [2.8]	3 [0.8]	0 [0.0]
53676-81	12 VDC			16.5						
53676-83	24 VDC			66.5						
53676-93	110 VDC			1430						
53677-81	12 VDC	Intermittent	15.5 Watts	9.3	Pull	84 [23.4]	30 [8.3]	17 [4.7]	6 [1.7]	0 [0.0]
53677-83	24 VDC			37.6						
53677-93	110 VDC			788						
53677-83	24 VDC	Pulse	86 Watts	6.7	Pull	156 [43.4]	105 [29.2]	76 [21.1]	30 [8.3]	0 [0.0]
53678-93	110 VDC			143						

(*) Normally Stocked

Non stocked items require a minimum order