



D-FRAME SOLENOID

Two position linear solenoid with D-frame construction.

Features

- Balance of cost and performance
- AC solenoids and DC solenoids available
- Encapsulated coils on most models
- UL approval on many models

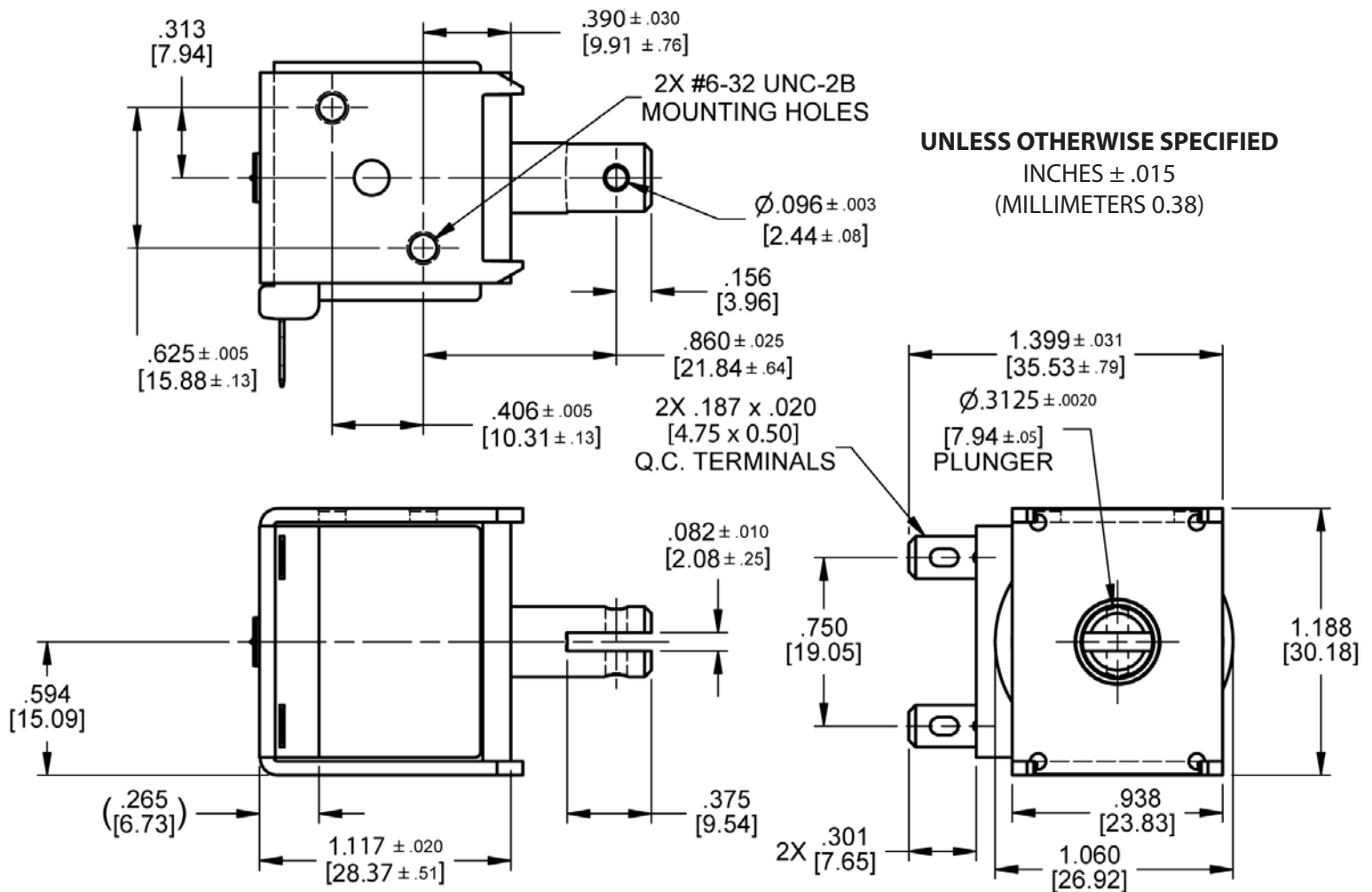


Electrical Specifications	
Coil Voltages	6, 12, 24, 120, 240 VAC 6, 12, 24, 110 VDC
Coil Power	8 VA Continuous, 21 VA Intermittent, 80 VA Pulse 5.5 Watts Continuous, 11.5 Watts Intermittent, 55 Watts Pulse
Coil Termination	.187" quick connect terminals (standard) Wire leads optional with tape wrapped coil
Duty Cycle	Continuous, intermittent and pulse duty available (see standard part numbers on page 4)
Coil Treatment	Encapsulated (tape wrapped optional)
Insulation Class	Class A Rating - 105°C (221°F) Max. (standard) Class F Rating - 155°C (311°F) Max. (optional)
Dielectric Strength	30 Volts and Under: 500 VRMS Over 30 Volts: 1000 VRMS plus 2X rated voltage for 1 minute
Mechanical Specifications	
Size	1.125" (H) x 0.938" (W) x 1.188" (H) (See page 2 for dimensional drawing)
Forces	See force curves on page 3
Plunger Diameter	0.3125"
Plunger Guide Material	Plastic
Mounting	2X #6-32 UNC-2B Mounting Holes
Weight	Plunger - 0.48 oz., Total - 3.13 oz.
Life Expectancy	250,000 Cycles (Dependent on load conditions)
Agency Approval	
	UL File No. E57982 For Continuous Duty UL File No. E74443 For Insulation Systems S105, S130, S130D, S130D1, S155D

All dimensions in Inches

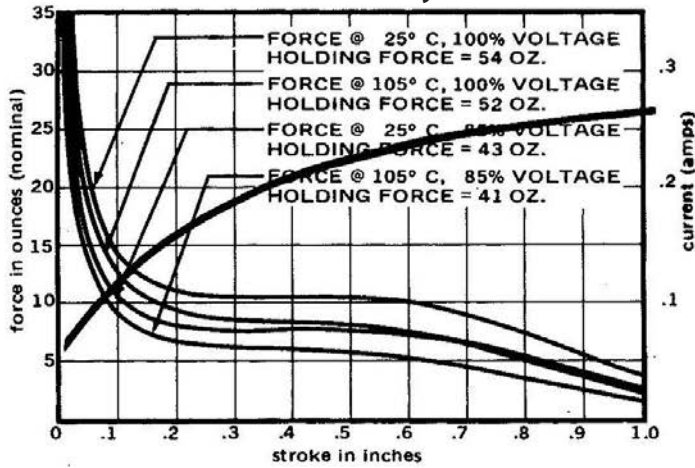
Dimensional View

Units: Inches [mm]

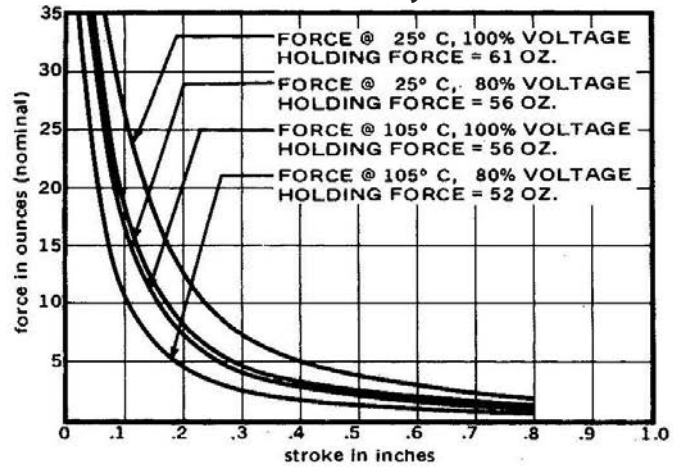


Force Curves

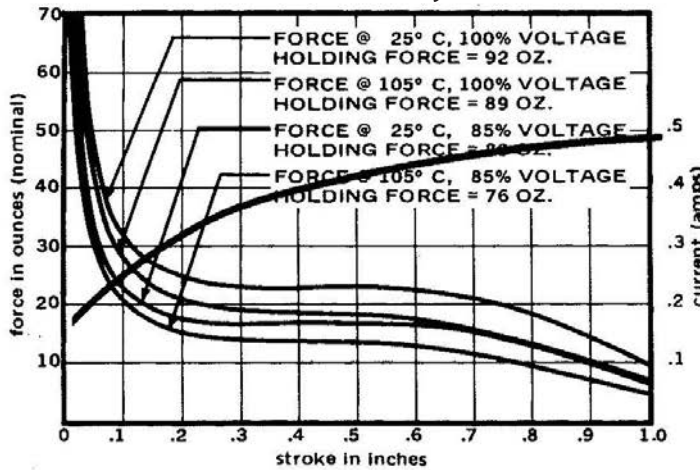
AC Continuous Duty - 8 VA



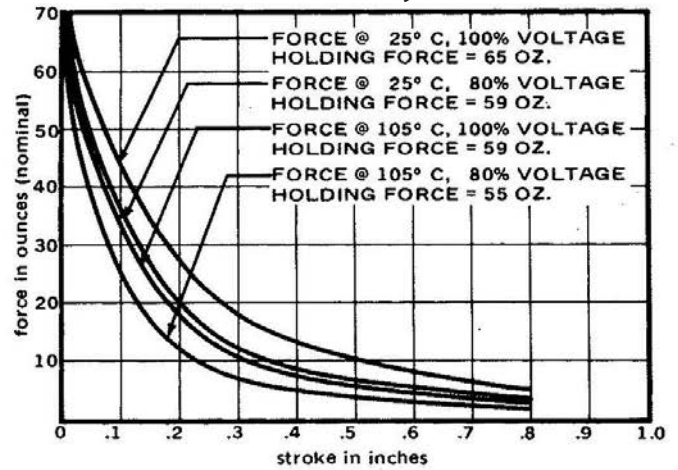
DC Continuous Duty - 5.5 Watts



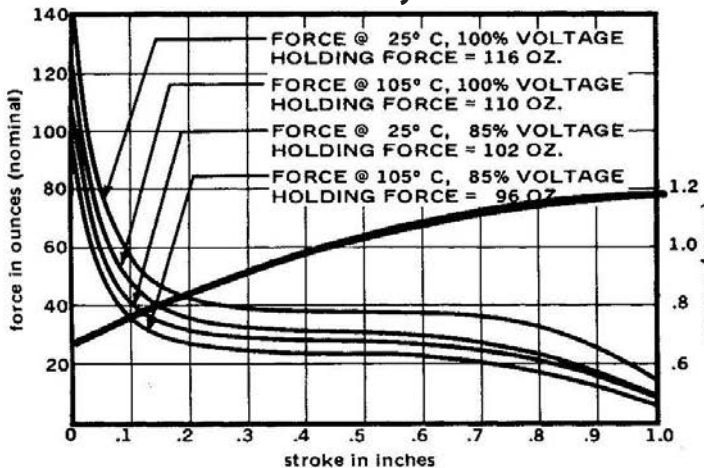
AC Intermittent Duty - 21 VA



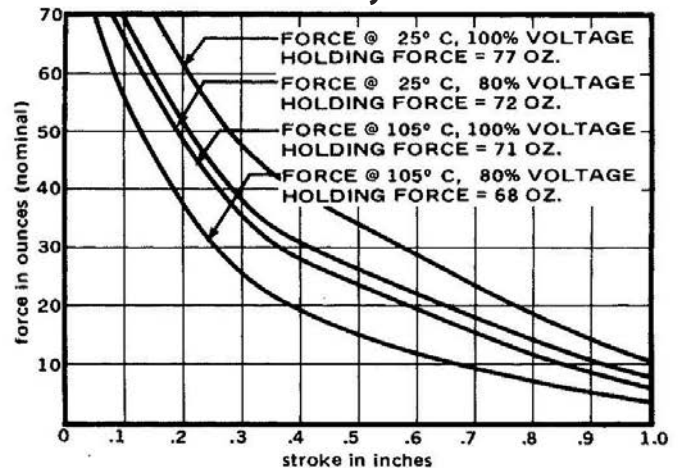
DC Intermittent Duty - 11.5 Watts



AC Pulse Duty - 80 VA



DC Pulse Duty - 55 Watts



Standard intermittent duty cycle at nominal voltage is 25%, with three (3) minutes maximum "ON" and nine (9) minutes minimum "OFF" in a repetitive cycle. Standard Pulse duty cycle is 10% with 100 milliseconds "ON" and 900 milliseconds "OFF".
 NOTE: Approx 36 sq. in. Heat Sink Required

Standard Part Numbers

Parts No.	Voltage	Duty Cycle	Power	Resistance (Ohms)	Operation	Typical Force (oz). 100% Voltage, 77°, Stroke @				
						0.000"	0.125"	0.250"	0.500"	0.750"
53706-80	6 VAC	Continuous	8 VA	1.00	Pull	54	13	11	11	8
53706-81	12 VAC			4.05						
53706-82	24 VAC			16.2						
53706-84*	120 VAC			420						
53706-85	240 VAC			1700						
53706-86	6 VAC	Intermittent	21 VA	0.54	Pull	92	28	23	23	20
53706-87	12 VAC			2.13						
53706-88	24 VAC			8.9						
53706-90*	120 VAC			220						
53706-91	240 VAC			890						
53706-92	6 VAC	Pulse	80 VA	.22	Pull	116	51	40	38	35
53706-93	12 VAC			.90						
53706-94	24 VAC			3.7						
53706-96	120 VAC			94.4						
53706-97	240 VAC			381						
53708-80	6 VDC	Continuous	5.5 Watts	6.6	Pull	61	22	8	4	2.5
53708-81*	12 VDC			27.1						
53708-82*	24 VDC			108						
53708-84	110 VDC			2250						
53708-86	6 VDC	Intermittent	11.5 Watts	3.2	Pull	65	38	22	10	6
53708-87*	12 VDC			12.7						
53708-88*	24 VDC			51						
53708-90	110 VDC			1040						
53708-92	6 VDC	Pulse	55 Watts	0.67	Pull	77	75	54	34	21
53708-93	12 VDC			2.7						
53708-94	24 VDC			11						
53708-96	110 VDC			220						

(*) Normally Stocked
 Non stocked items require a minimum order