

C-FRAME SOLENOID



Two position linear solenoid with C-frame construction.

Features

- Economical construction
- AC solenoids and DC solenoids available
- Tape Wrapped coils on most models
- UL approval on many models

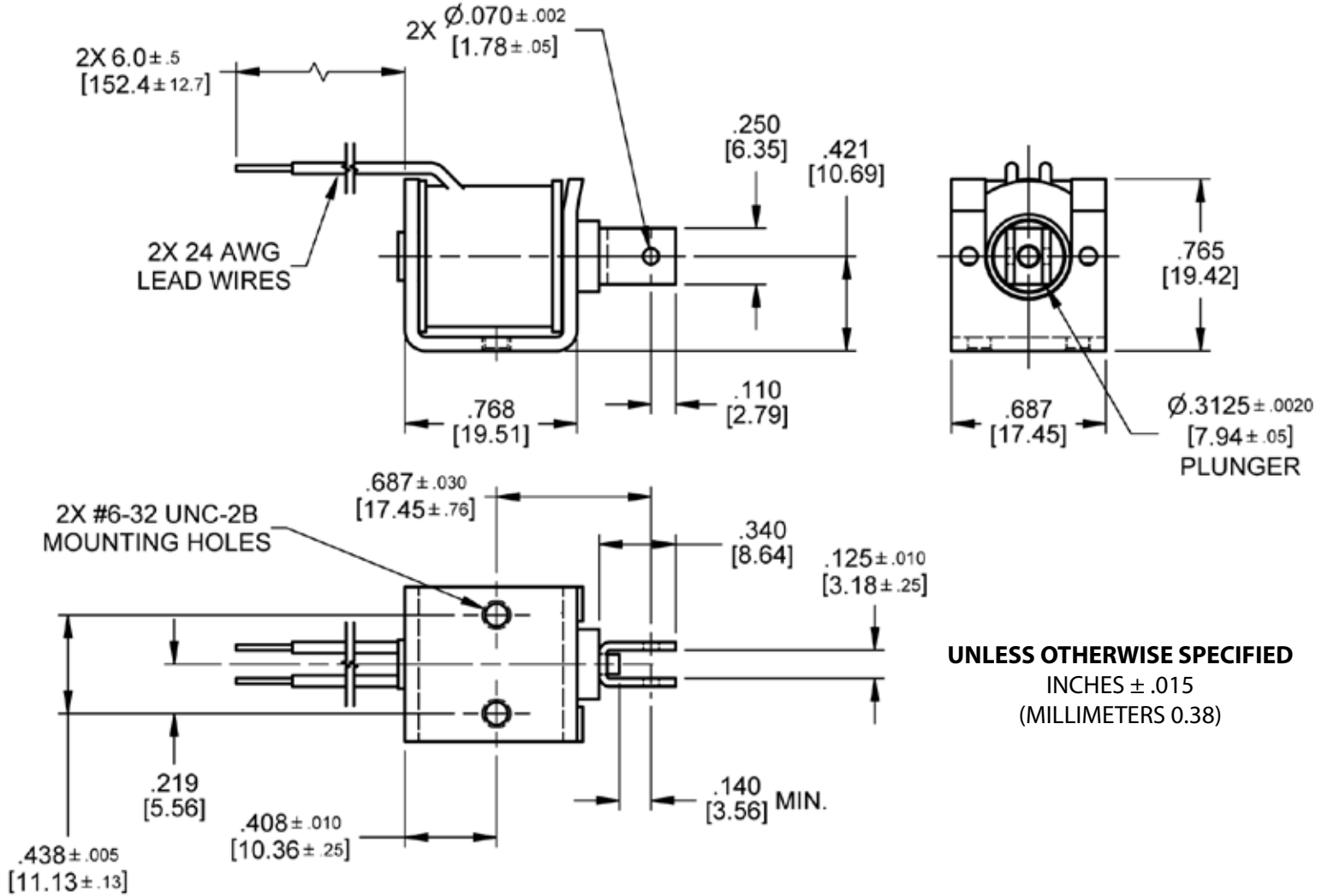


Electrical Specifications	
Coil Voltages	6, 12, 24, 120, 240 VAC 6, 12, 24, 110 VDC
Coil Power	4.5 VA Continuous, 12 VA Intermittent, 45 VA Pulse 3.5 Watts Continuous, 8 Watts Intermittent, 35 Watts Pulse
Coil Termination	Wire leads 24 AWG
Duty Cycle	Continuous, Intermittent, Pulse (see standard part numbers on page 4)
Coil Treatment	Tape Wrapped
Insulation Class	Class A Rating - 105°C (221°F) Max.
Dielectric Strength	30 Volts and Under: 500 VRMS Over 30 Volts: 1000 VRMS plus 2X rated voltage for 1 minute
Mechanical Specifications	
Size	0.768" [19.5] (L) x 0.687" [17.4] (W) x 0.765" [19.4] (H) (See dimensional drawing on page 2)
Forces	See force curves on page 3
Plunger Diameter	Ø 0.3125" [7.9]
Plunger Guide Material	Plastic
Mounting	2X #6-32 UNC-2B Mounting Holes
Weight	Plunger - 0.3 oz [9.0 gms], Total - 1.0 oz [28.4 gms]
Life Expectancy	250,000 Cycles (Dependent on load conditions)
Agency Approval	
	UL File No. E57982 For Continuous Duty UL File No. E74443 For Insulation Systems S105

Dimensions: inches [mm]

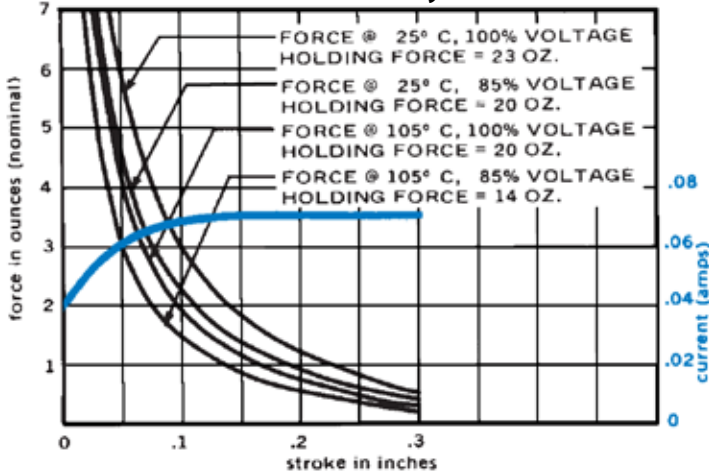
Dimensional View

Units: Inches [mm]

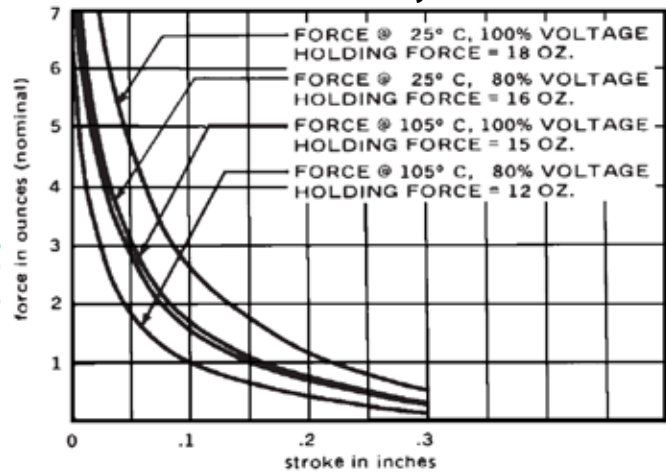


Force Curves

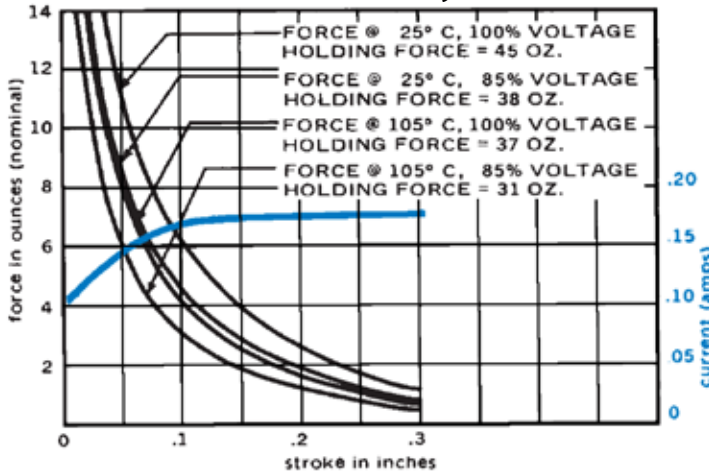
AC Continuous Duty - 4.5 VA



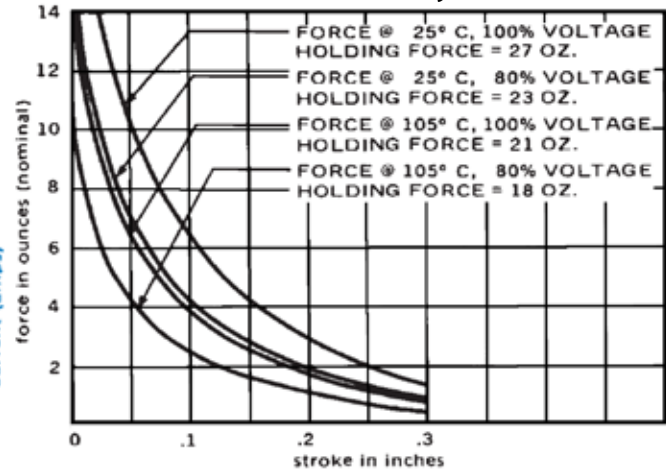
DC Continuous Duty - 3.5 Watts



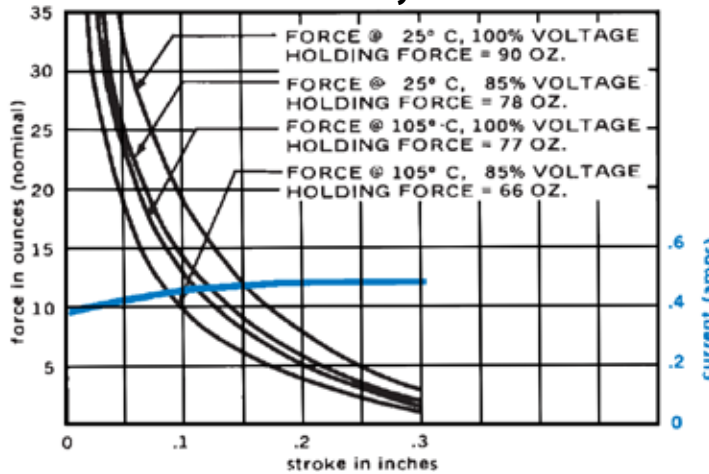
AC Intermittent Duty - 12 VA



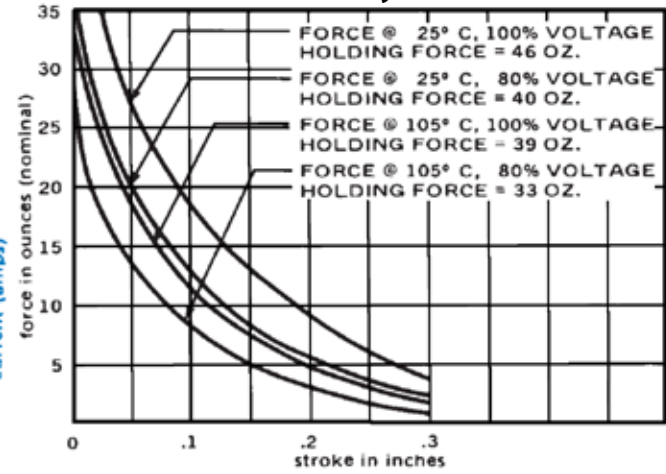
DC Intermittent Duty - 8 Watts



AC Pulse Duty - 45 VA



DC Pulse Duty - 35 Watts



Standard intermittent duty cycle at nominal voltage is 25%, with one (1) minute maximum "ON" and three (3) minutes minimum "OFF" in a repetitive cycle. Standard Pulse duty cycle is 10% with 100 milliseconds "ON" and 900 milliseconds "OFF".
NOTE: Approx 36 sq. in. Heat Sink Required

Standard Part Numbers

Parts No.	Voltage	Duty Cycle	Power	Resistance (Ohms)	Operation	Typical Force oz [N] 100% Voltage, 77°F [25°C], Stroke @				
						0.000"	0.125"	0.250"	0.500"	0.750"
53645-80	6 VAC	Continuous	4.5 VA	3.7	Pull	23 [6.4]	2.4 [0.7]	0.8 [0.2]	0 [0.0]	0 [0.0]
53645-81	12 VAC			14.9						
53645-83	24 VAC			60.5						
53645-94	120 VAC			1530						
53645-97	240 VAC			6120						
53646-80	6 VAC	Intermittent	12 VA	1.55	Pull	45 [12.5]	5 [1.4]	1.7 [0.5]	0 [0.0]	0 [0.0]
53646-81	12 VAC			6.3						
53646-83	24 VAC			25.4						
53646-94	120 VAC			664						
53646-97	240 VAC			2660						
53787-80	6 VAC	Pulse	45 VA	0.58	Pull	90 [25.0]	15 [4.2]	5 [1.4]	0 [0.0]	0 [0.0]
53787-81	12 VAC			2.34						
53787-83	24 VAC			9.2						
53787-94	120 VAC			231						
53787-97	240 VAC			932						
53648-80	6 VDC	Continuous	3.5 Watts	10.5	Pull	18 [5.0]	2.2 [0.6]	0.8 [0.2]	0 [0.0]	0 [0.0]
53648-81	12 VDC			42						
53648-83	24 VDC			167						
53648-93	110 VDC			3400						
53649-80	6 VDC	Intermittent	8 Watts	4.34	Pull	27 [7.5]	5 [1.4]	2 [0.6]	0 [0.0]	0 [0.0]
53649-81	12 VDC			17.4						
53649-83	24 VDC			71.0						
53649-93	110 VDC			1460						
53752-80	6 VDC	Pulse	35 Watts	1.06	Pull	46 [12.8]	15 [4.2]	6 [1.7]	0 [0.0]	0 [0.0]
53752-81	12 VDC			4.3						
53752-82	24 VDC			17.4						
53752-84	110 VDC			363						

(*) Normally Stocked
Non stocked items require a minimum order