

D-FRAME SOLENOID

Two position linear solenoid with D-frame construction.

Features

- Balance of cost and performance
- AC solenoids and DC solenoids available
- Encapsulated coils on most models
- UL approval on many models

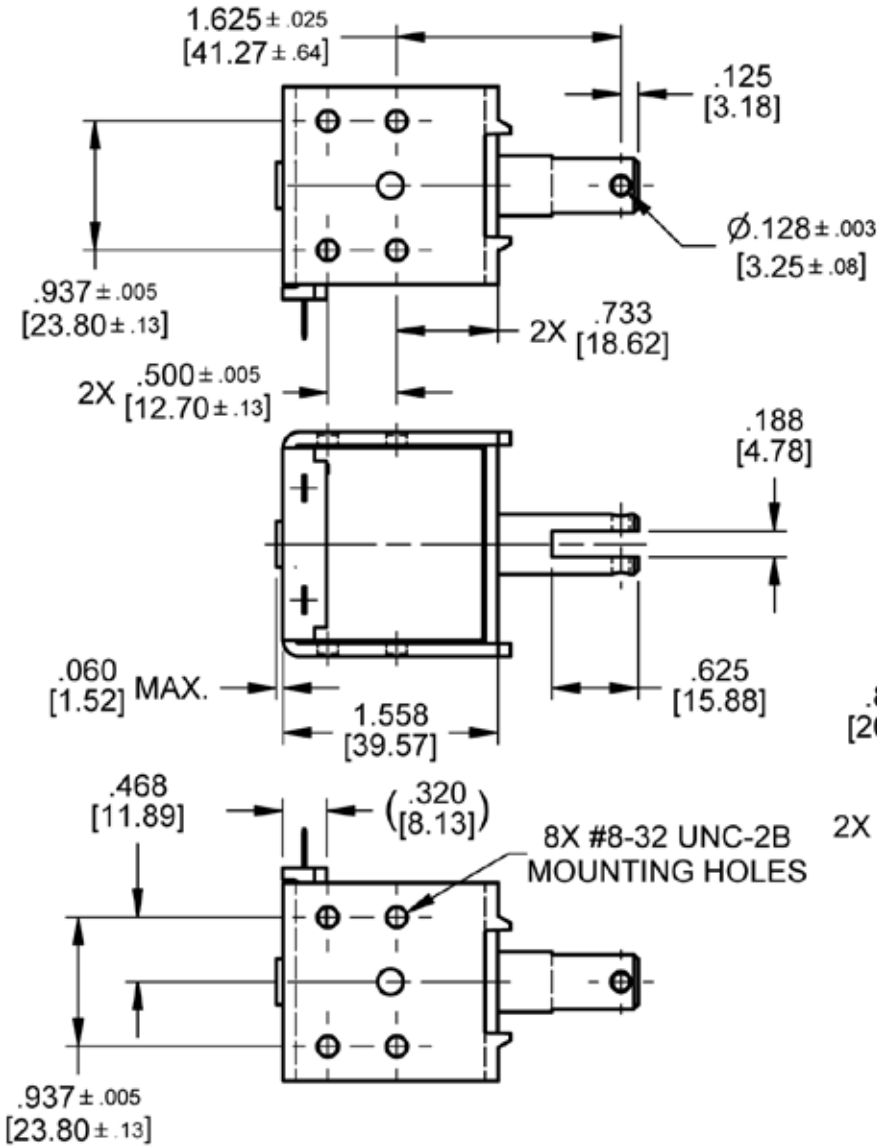


Electrical Specifications	
Coil Voltages	6, 12, 24, 120, 240 VAC 6, 12, 24, 110 VDC
Coil Power	13 VA Continuous, 59 VA Intermittent, 135 VA Pulse, 11 Watts Continuous, 29 Watts Intermittent, 115 Watts Pulse
Coil Termination	0.187" [4.7] Quick Connect Terminals (standard) 0.250" [6.4] Quick Connect Terminals (optional) Wire leads optional with tape wrapped coil
Duty Cycle	Continuous, intermittent and pulse duty available (see standard part numbers on page 4)
Coil Treatment	Encapsulated (tape wrapped optional)
Insulation Class	Class A Rating - 105°C (221°F) Max. (standard) Class F Rating - 155°C (311°F) Max. (optional)
Dielectric Strength	30 Volts and Under: 500 VRMS Over 30 Volts: 1000 VRMS plus 2X rated voltage for 1 minute
Mechanical Specifications	
Size	1.558" [39.6] (L) x 1.437" [36.5] (W) x 1.625" [41.3] (H) (See dimensional drawing on page 2)
Forces	See page 3 for force curves
Plunger Diameter	Ø 0.4375" [11.1]
Plunger Guide Material	Plastic
Mounting	8X #8-32 UNC-2B Mounting Holes
Weight	Plunger - 1.2 oz [34.0 gms], Total - 10 oz [283.5 gms]
Life Expectancy	250,000 Cycles (Dependent on load conditions)
Agency Approval	
	UL File No. E57982 For Continuous Duty UL File No. E74443 For Insulation Systems S105, S130, S130D, S130D1, S155D

Dimensions: inches [mm]

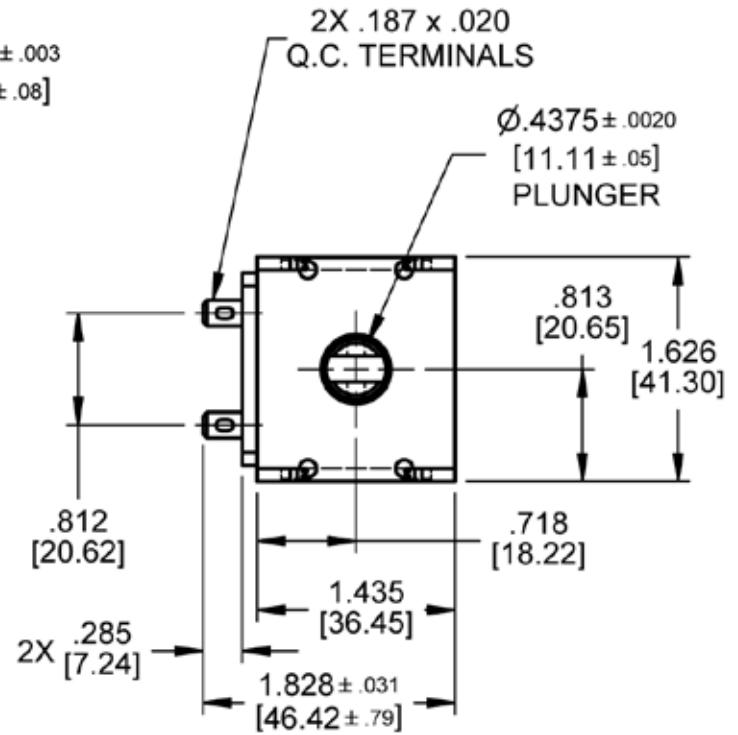
Dimensional View

Units: Inches [mm]



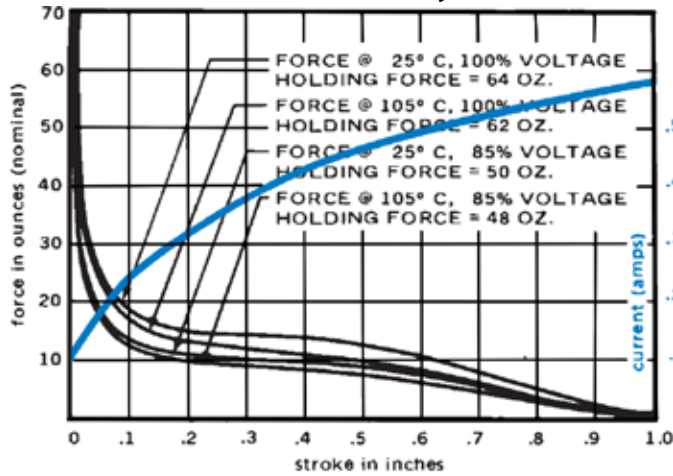
UNLESS OTHERWISE SPECIFIED

INCHES $\pm .015$
(MILLIMETERS 0.38)

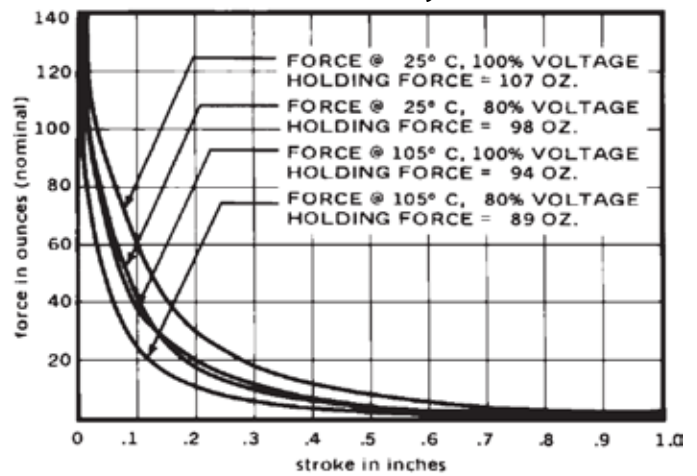


Force Curves

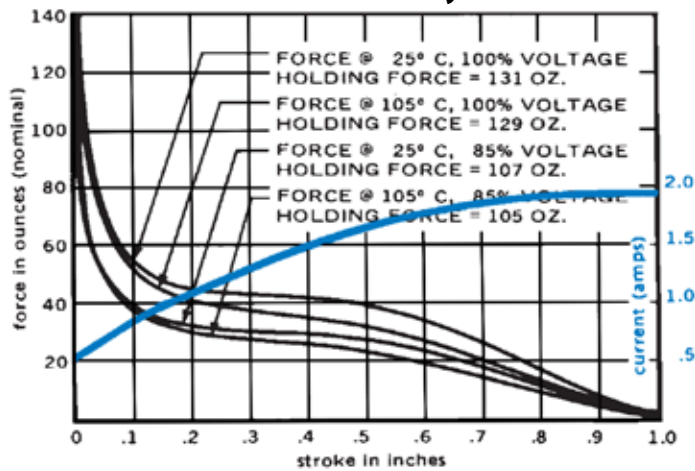
AC Continuous Duty - 13 VA



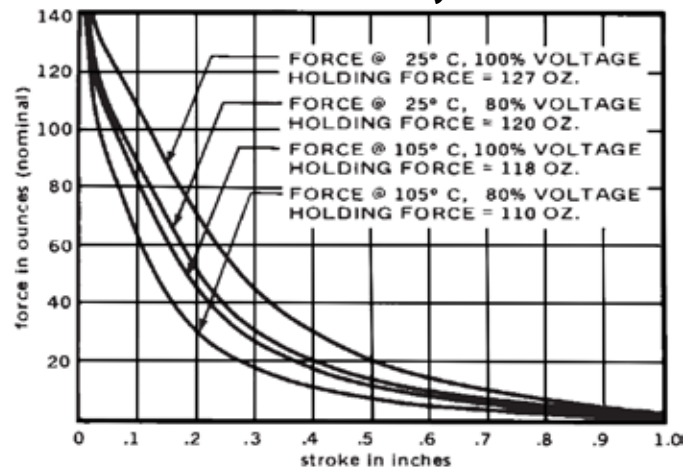
DC Continuous Duty - 11 Watts



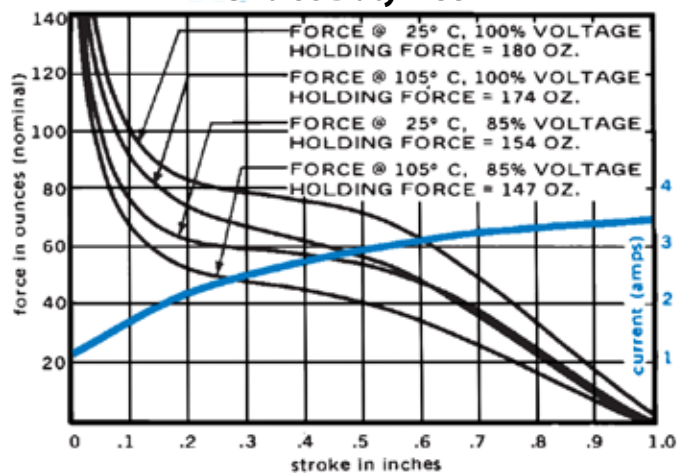
AC Intermittent Duty - 59 VA



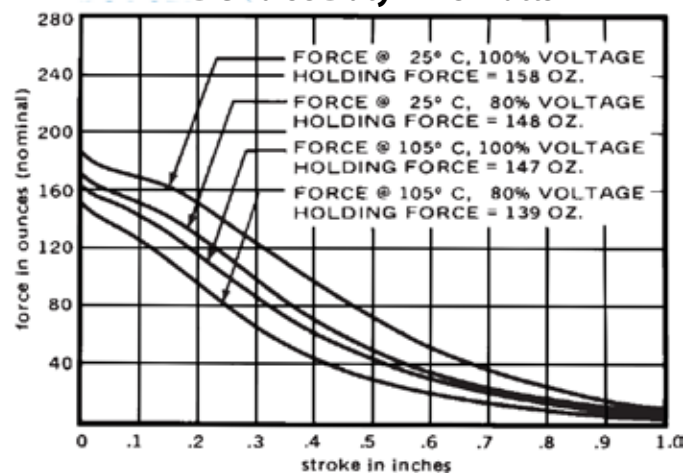
DC Intermittent Duty - 29 Watts



AC Pulse Duty - 135 VA



DC Pulse Duty - 115 Watts



Standard intermittent duty cycle at nominal voltage is 25%, with three (3) minutes maximum "ON" and nine (9) minutes minimum "OFF" in a repetitive cycle. Standard Pulse duty cycle is 10% with 100 milliseconds "ON" and 900 milliseconds "OFF".
NOTE: Approx 36 sq. in. Heat Sink Required

Standard Part Numbers

Parts No.	Voltage	Duty Cycle	Power	Resistance (Ohms)	Operation	Typical Force oz [N] 100% Voltage, 77°F [25°C], Stroke @				
						0.000"	0.125"	0.250"	0.500"	0.750"
53729-80	6 VAC	Continuous	13 VA	0.40	Pull	64 [17.8]	17 [4.7]	15 [4.2]	13 [3.6]	6 [1.7]
53729-81	12 VAC			1.58						
53729-82	24 VAC			6.4						
53729-84*	120 VAC			164						
53729-85	240 VAC			673						
53729-87	12 VAC	Intermittent	59 VA	0.45	Pull	131 [36.4]	50 [13.9]	44 [12.2]	40 [11.1]	21 [5.8]
53729-88	24 VAC			1.83						
53729-90*	120 VAC			47.0						
53729-91	240 VAC			191						
53729-93	12 VAC	Pulse	135 VA	0.303	Pull	180 [50.0]	94 [26.1]	80 [22.2]	72 [20.0]	41 [11.4]
53729-94	24 VAC			1.22						
53729-96	120 VAC			31.7						
53729-97	240 VAC			128.2						
53728-80	6 VDC	Continuous	11 Watts	3.34	Pull	107 [29.7]	50 [13.9]	24 [6.7]	9 [2.5]	4 [1.1]
53728-81*	12 VDC			13.6						
53728-82*	24 VDC			54.7						
53728-84	110 VDC			1100						
53728-86	6 VDC	Intermittent	29 Watts	1.22	Pull	127 [35.3]	98 [27.2]	55 [15.3]	20 [5.6]	9 [2.5]
53728-87*	12 VDC			4.92						
53728-88*	24 VDC			20.0						
53728-90	110 VDC			432						
53728-92	6 VDC	Pulse	115 Watts	.303	Pull	158 [43.9]	165 [45.9]	140 [38.9]	70 [19.5]	30 [8.3]
53728-93	12 VDC			1.22						
53728-94	24 VDC			4.92						
53728-96	110 VDC			106						

(*) Normally Stocked

Non stocked items require a minimum order