



SELECT CONFIGURATIONS

## HOSE SET

Hose sets for potable water applications.

### Applications

- Coffee/espresso machines
- Vending equipment
- Ice maker equipment
- Water purification equipment
- Appliances
- Potable water applications

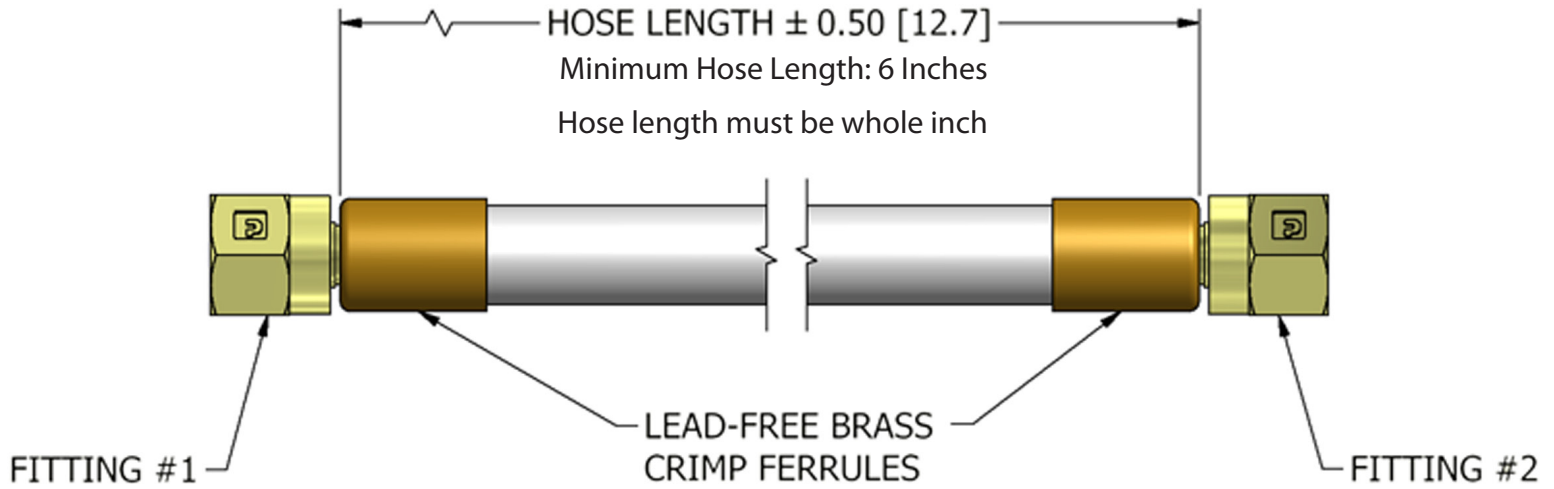
### Features

- NSF certification on select options
- Lead-free brass fittings (<0.25% Lead)
- Multiple connection options
- Tube length per your specifications

Mechanical Specifications	
Operating Pressure	Up to 150 psi at 122° F
Burst Pressure	750 psi
Ambient temperature	40-122° F
Media	Water
Media Temperature	Up to 122° F
Tube Material	Polyester reinforced Polyethylene beverage hose
Gasket Material	TPE - Thermoplastic elastomer
Brass Fitting Material	Lead-free brass (<0.25% Lead>) (on wetted parts)
Plating Option	Tin plating per ASTM B545
Agency Approvals	NSF certified (select options)

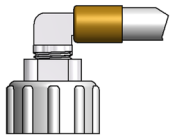
## Dimensional View

Units: Inches [mm]



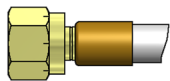
## Ordering Information

DHSP -            -            -             
 Tube length    Fitting #1    Fitting #2  
 in whole inches



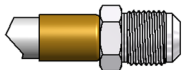
### Garden Hose Thread Fitting (3/4 - 1 1/2)

- 01 = 90° Elbow No-Lead Brass
- 02 = 90° Elbow No-Lead Brass with Tin Plating
- 03 = Straight Fitting No-Lead Brass
- 04 = Straight Fitting No-Lead Brass with Tin Plating



### Female Swivel Fitting

- 20 = 5/8 - 18 UNF 45° Flare No-Lead Brass
- 21 = 5/8 - 18 UNF 45° Flare No-Lead Brass with Tin Plating
- 22 = 7/16 - 20 UNF 45° Flare No-Lead Brass
- 23 = 7/16 - 20 UNF 45° Flare No-Lead Brass with Tin Plating



### Male Compression Fitting

- 40 = 5/8 - 18 UNF 45° Flare No-Lead Brass
- 41 = 5/8 - 18 UNF 45° Flare No-Lead Brass with Tin Plating
- 42 = 7/16 - 20 UNF 45° Flare No-Lead Brass
- 43 = 7/16 - 20 UNF 45° Flare No-Lead Brass with Tin Plating

## Standard Part Numbers

Part Number	Hose Length (Inches)	Fitting One	Fitting Two	Model Description
	48	01 = 90° Elbow	20 = 5/8 - 18 UNF 45° Flare	DHSP-48-01-20
	48	01 = 90° Elbow	40 = 5/8 - 18 UNF 45° Flare	DHSP-48-01-40
	48	01 = 90° Elbow	22 = 7/16 - 20 UNF 45° Flare	DHSP-48-01-22
	48	01 = 90° Elbow	42 = 7/16 - 20 UNF 45° Flare	DHSP-48-01-42